



Spring 1
5th Jan—13th Feb

Sacred Heart Catholic Primary School

CURRICULUM MAP SPRING TERM YEAR 4

Spring 2
23rd Feb-27th Mar



MATHEMATICAL UNDERSTANDING

Our Mathematics is based on the White Rose scheme of learning. It will develop the children’s foundational knowledge of skills as well as improving their problem solving skills. This term we will study:

Multiplication and Division: The children will consolidate their times tables and apply their skills to written methods and larger numbers.

Fractions: The children will look at mixed and improper fractions, converting equivalent fractions and adding and subtracting.

Decimals: We will explore tenths and hundredths as fractions and decimals before moving on to partitioning, ordering, comparing and rounding.

Time: The children will look at telling the time on digital and analogue clocks, solving time-related word problems and converting to 24 hour clock.

Times tables: We will practice our tables weekly. Focussing on 6, 7 and 8 times tables.

COMPUTING

This term we will be working on creating digital music before learning how to write in HTML



RELIGIOUS EDUCATION

In RE our first topic is ‘Galilee to Jerusalem’ where we will focus on different views of Jesus as the messiah. After half term, we will begin ‘Desert to Garden’ and will reflect on forgiveness, the Prodigal Son and Holy Week.



SCIENCE

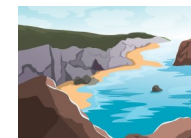
In the final part of our work on ‘Sound’, we will look at insulation, the effects of distance and how our ears work.

After half term, we will look at ‘States of Matter’ focussing on melting, evaporating and freezing.



HUMANITIES

In Geography, the focus is coasts. We will explore how they are changing, their use and the types of land formations we find.



In History, we will study the Vikings, how they lived and how they changed Britain.

THE ARTS AND DT

This half term we will be designing and structures using CAD. In Art, we will explore different techniques for landscape painting.

In music, we will look be preparing for our Easter play.



WELL BEING

PE this half term will be gymnastics and orienteering.. Next half term it will be hockey and dodgeball. PE days are Mondays and Fridays.

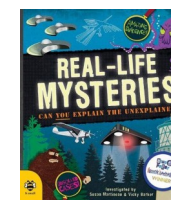
In PHSE, we will be looking at ‘Healthy Me’ and ‘Dreams and Goals.’

In SRE (Live life to the full), we will look at the units on ‘Respecting our bodies’ and ‘Chatting Online.’

ENGLISH AND READING

We will begin this term by writing a piece of information writing based on travel brochures.’ We will look at organisational features and persuasive techniques. After this, we will look at newspaper reports. We will explore their purpose and grammatical features before creating our own articles.

After half term, we will again practise narrative writing based on the story ‘Leon and the place between.’ We will then produce our own haikus.



Our grammar and punctuation focuses will be use of accurate punctuation including commas and inverted clauses and inverted commas. Spellings will be sent home weekly.

Our reciprocal reading book this term will be ‘Varjak Paw’ by SF Said. We will also look at topic themed reading comprehensions.

SPANISH

We will be describing what I and Other people do.

