



THEME: 1
DARE TO BE DIFFERENT

Sacred Heart Catholic Primary School

CURRICULUM MAP

SUMMER TERM YEAR 6



THEME 2:
CHANGES

MATHEMATICAL UNDERSTANDING

Up until half term, we will focus on algebra looking at patterns, rules and solving problems. We will then complete revision of key topics in preparation for the SATs.

Once half term is completed, we will explore the history of Maths and some of the 'magical' elements behind this engaging subject. This work will include:

Maths Around Us

By looking at the world around us, we will explore measuring. We will look at Fermi estimates and methods to solve enquiry problems such as - how much toothpaste will you use in your lifetime?

Puzzles and Patterns

In this unit, we will explore some of the well-known patterns that appear in nature such as the Fibonacci sequence.

Maths around the world

We will look at the history of methods; different methods used around the world and how different cultures have influenced mathematics today.

COMPUTING

In this half term we will be working on securing key skills required for the transition to KS3.



RELIGIOUS EDUCATION

In RE our first topic is 'Transforming the Spirit' where we will learn about the significance of the Pentecost and the early church. After half term, we look at other faiths with a focus on Islam as well as discussing the role of vocations in 'Called to Serve.'



SCIENCE

In this term we will be learning about the 'Light and how we see.' We will find out about the different parts of the eye and how light travels. After half term, the focus shifts to Evolution. We will discuss key scientists such as Darwin and how different creatures inherit traits.



HUMANITIES

In History, we look at the Benin empire paying particular attention to its development and the factors that led to its demise.

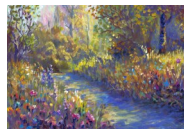
After half-term our Geography unit focuses on the regions of France and how they differ from our own.



THE ARTS AND DT

This half term we design and create our own burgers considering aesthetic and nutrition.

In Art, we will look at impressionist style of painting.



In music, we will learn the songs for our play.

WELL BEING

PE this half term will be rounders, athletics and tennis. PE days are Mondays and Wednesdays.

In PHSE, we will be completing our work on 'Dreams and Goals' before moving on to work on transitioning for secondary school.

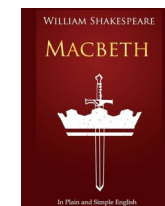
In SRE (Live life to the full), we will look at how reproduction.

ENGLISH AND READING

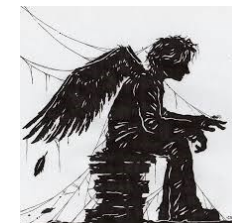
During the first half-term, our work will focus on preparation for SATs. Specific tasks designed to prepare for the reading and grammar tests will be undertaken.

Once completed, we will look at different types of writing and produce work that explains, instructs and persuades. Various texts will be used to support this.

We will also be looking at a range of texts considering poems to persuade. This work will then link onto persuasion writing based upon the UNICEF rights of the child. In addition we, will look at biographies and classic texts such as those written by Shakespeare.



Our reciprocal reading book this term will be Skellig by David Almond.



SPANISH

We will be learning greetings and how to say where we live.

