



THEME: 1

WONDROUS WORLD

Sacred Heart Catholic Primary School

CURRICULUM MAP SPRING TERM YEAR 6

THEME 2:

RISE TO THE CHALLENGE



MATHEMATICAL UNDERSTANDING

We continue to use the WHITE ROSE scheme of work. As well as recapping on learning previously covered, we will also be exploring new units of work.

Ratio: The children will explore sequences and solve problems linked to ratio using the language 'for every.'

Algebra: The children will solve problems using one and two step functions. They will also solve equations using formula.

Decimals: We will explore using the for rules of number in the context of decimals. We will revisit place value and rounding.

Percentages: The children will solve percentages of amounts and percentages as part of a whole. We will also learn the equivalence of fractions, decimals and percentages.

Area & volume: We will learn how to calculate 2D area such as triangles and parallelograms as well as 3D volume using formula.

Statistics: We will read and interpret line graphs

COMPUTING

In this half term we will be working on creating story boards with the purpose of designing our own adverts.



RELIGIOUS EDUCATION

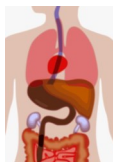
In RE our first topic is 'Exploring the Mass' where we will learn about the significance of the different parts of mass.



After half term, we will deepen our understanding of Jesus in the unit 'Jesus the Messiah.'

SCIENCE

In this half term we will be learning about the 'Animals including humans.' we will find out about the heart and the importance of circulation. We will also look at digestion and the importance of a healthy diet. In addition, this topic covers work on drugs and their effects.



HUMANITIES

In geography, we look at the Environment paying particular attention to the role of recycling and the damage caused by plastic pollution.

After half-term our History unit focuses on the ancient Greeks as we decide 'which was the greatest ancient civilisation?'



THE ARTS AND DT

This half term we will be finishing our work on 'Expressing Ourselves' before moving onto designing an electronic 'steady hand' game.



After half term, we will look at sculpting vases using clay.



In **music**, we will learn about pitch, tempo and texture.

WELL BEING

PE this half term will be dance and orienteering. Next half term it will be gymnastics and cricket. PE days are Wednesdays and Thursdays.

In **PHSE**, we will be looking at 'Keeping Healthy' and 'Dreams and Goals'.

In **SRE** (Live life to the full), we will look at how social media can effect our emotions.

ENGLISH AND READING

We will begin this term by writing a range of different writing styles based on the 'Spiderwick Chronicles'. These will include newspaper articles, diaries and non-chronological reports.

We will also be looking at a range of texts considering the use of dialogue to enhance narratives writing. Some examples of the texts used are: The hobbit, Wonder and 'A Christmas Carol.'



After half term, we focus closely on preparation for SATs. We will complete revision work around Percy Jackson and focussed reading comprehension preparation using Greek myths.

Our grammar and punctuation focuses will be use of higher level punctuation such as semi-colons, verb tense forms include perfect form and writing formally.

Our reciprocal reading book this term will be Skellig by David Almond.

SPANISH



We will be saying what we, and others do followed by saying how many and describing things.